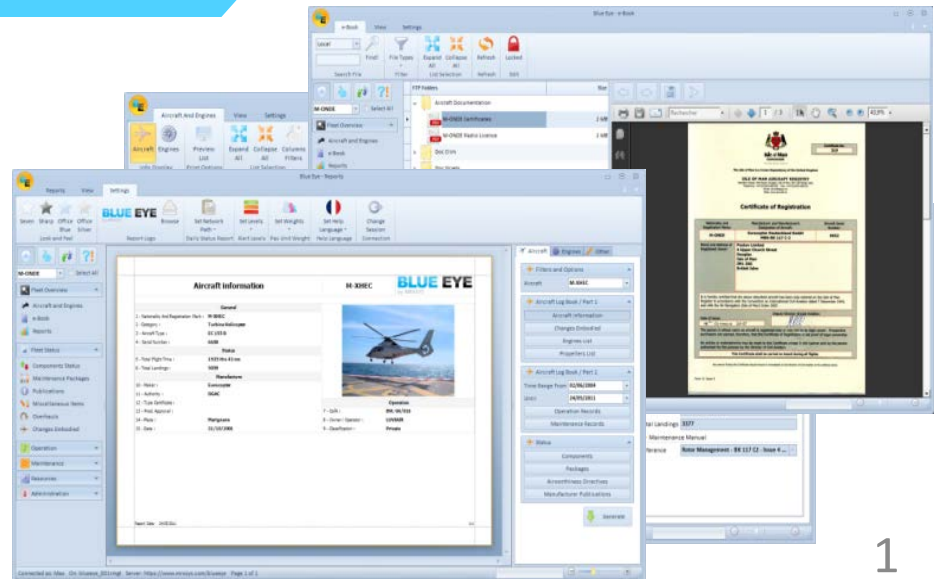


BLUE EYE SYSTEM HOW TOs

Components status recording and
tracking





Access your aircraft component status

Blue Eye - Aircraft And Engines

Aircraft And Engines View Settings

Aircraft Engines Preview List Raw Grid Preview Expand All Collapse All Columns Filters Import Data Edit

Info Display Print Options List Selection Spreadsheet Import Edit List

Aircraft Fleet

Category

A/C Reg	S/N	Type	Flight Time	Landings	Manufacture Date	Operations	C of A	Registration Authority
Category: Business Jet								
G-DEMO3	420	A320	8500 Hrs 0 mn	3400	10/04/2004	Transport	COA0001	CAA

Click on Components Status to load the module

For this example we start with an A320 aircraft with an empty status

Next Due Aircraft Next Due Engines Required Maintenance (0 Task) Ops And Discrepancies (0 Open)

Aircraft Status

Next Due In Description

Calendar:

Hour:

Landing:

Dropping:

General

S/N: 420

Type: A320

Category: Business Jet

Current Status

Total Time S/N: 8500 Hrs 0 mn

Total Landings: 3400

Total Droppings:

Maintenance Manual

Reference: MyCAMO - A320 - Issue 1 - Rev. 0

Connected as: blueeye On: beDemo3 Server: https://azure.mrxsys.com/Services/BlueLifeService.aspx Nothing Stop



Access your aircraft component status

Blue Eye - Components Status

Components Status View Settings

Aircraft Component Engines Propellers Preview List Raw Grid Preview Item Print Options Expand All Collapse All Columns Filters Groups Import Data Spreadsheet Import Edit

G-DEMO3 Select All

Aircraft Reg. ATA

Flag	Designation	Reference	Serial Number	Install Date	Status	Rel. Files
Aircraft Components						

Fleet Overview

Aircraft and Engines

e-Book

Reports

Fleet Status

Components Status

Maintenance Packages

Publications

Miscellaneous Items

Overhauls

Changes Embodie

Operation

Maintenance

Resources

Administration

By default, you enter your "Aircraft Components Status". Click on Engines Components to see your engines status

Currently the status is empty, no components have been recorded yet. Click the Edit button to start recording your first component

Aircraft Component Historical

General

On Aircraft

Designation

Reference

Serial Number

Sub Assy of ATA

Not Concerned

Has Log Card

Installation

Install Date

Component TT

Comp. Ldgs

Comp. Dggs

Aircraft TT

Aircraft Ldgs

Comp. Dggs

Removal

Removal Date

Component TT

Comp. Ldgs

Comp. Dggs

Aircraft TT

Aircraft Ldgs

Comp. Dggs

Current Status

Status

Replacing

Replaced By

Connected as: blueeye On: beDemo3 Server: https://azure.mrxsys.com/Services/BlueLifeService.aspx Nothing Stop



Record a new component

Click the Add button in the main ribbon to add a new component to your status

To be able to switch to Edit mode, you must make sure that the "Select All" button is unchecked, and you must select the required aircraft from the dropdown list

Fill the required information in the detail pane or directly in the grid

Below the components grid there is the associated potentials window. Click the Add button to attach a potential to the newly created component. Here we add a 6 Years calendar life limit

Components Status

View Settings

Components Status

Info Display

Preview List **Raw Grid** **Preview Item** **Print Options**

Expand All **Collapse All** **Columns Filters** **Groups** **List Selection**

Import Data **Spreadsheet Import** **Edit List** **Cancel Changes** **Add** **Duplicate Element** **Remove** **Save Data**

Aircraft Components

Aircraft Reg. **ATA**

Flag	Designation	Reference	Serial Number	Install Date	Status	Rel. Files
Aircraft Reg.: G-DEMO3						
ATA: 29 - HYDRAULIC POWER						
I	BEACON UNDERWATER LOC.ULB	3-1531	001	22/03/2013	Installed	0

General

On Aircraft: **G-DEMO3**

Designation: **PUMP RAT-RAM AIR TURBINE**

Reference: **520550**

Serial Number: **001**

Sub Assy of ATA: **Not Concerned**

ATA: **29** **Has Log Card**

Installation

Install Date: **22/03/2013**

Component TT: **0 Hrs 0 mn** **Comp. Ldgs** **0 Ldg** **Comp. Dpgs** **0 Dpg**

Aircraft TT: **8500 Hrs 0 mn** **Aircraft Ldgs** **3400 Ldgs** **Comp. Dpgs** **0 Dpg**

Removal

Removal Date:

Component TT: **Comp. Ldgs** **Comp. Dpgs**

Aircraft TT: **Aircraft Ldgs** **Comp. Dpgs**

Current Status

Status: **Installed**

Replacing:

Replaced By:

Potentials

Calendar **Hour** **Landing** **Scraping**

Repetitive	Status	Action/Chap.	Potential	Tolerance	Start Date	Current Used	Used Tol.	Remaining	Deadline on A/C
<input checked="" type="checkbox"/>	Active	Discard - SCRAP BATTERY - CMM 23-51-34, MPD 237135-01-1	6 Years	0 Day	23/03/2013	0 Day	0,00 %	6 Years	23/03/2019

Connected as: blueeye On: beDemo3 Server: https://azure.mrxsys.com/Services/BlueLifeService.asmx Nothing Stop



Record a new component

In the detail pane, click the Related Files tab to upload scanned documents related to your component

When every information concerning your component has been recorded, you can click the Save button to push all the modifications at once to your database

The screenshot displays the 'Blue Eye - Components Status' application. The left sidebar contains a navigation menu with options like 'Aircraft Components', 'Engines', 'Fleet Overview', 'Aircraft and Engines', 'e-Book', 'Reports', 'Fleet Status', 'Components Status', 'Maintenance Packages', 'Publications', 'Miscellaneous Items', 'Overhauls', 'Changes Embodied', 'Operation', 'Maintenance', 'Resources', 'Maintenance Manuals', 'MEL Minimum Equipment Lists', 'ATA ATA List', 'Address Book', and 'Administration'. The main area is divided into a 'Detail pane' and a 'Related Files' pane. The 'Detail pane' shows a table with columns 'Flag', 'Designation', and 'Ref'. The 'Related Files' pane shows a list of files, including 'EASA FORM 1' (134 KB). A blue arrow points from the 'Save' button in the top right to the 'Related Files' pane. Another blue arrow points from the 'EASA FORM 1' file to the 'Add File' button in the top right. A third blue arrow points from the 'EASA FORM 1' file to the 'Downloads' section in the bottom left.

Related Files

Files	Size
EASA FORM 1	134 KB

File Name

Downloads

EASA FORM 1

Authorised Release Certificate EASA FORM 1

1. Approving Competence Authority/Country: FOCA / SWITZERLAND

2. Organisation Name and Address: SR Technics Switzerland CH-8058 Zurich Airport, Switzerland

3. Work order/Contract/Service: 0051082607

4. Part Number: DK120

5. Description: BEACON UNDERWATER LOC.ULB

6. Serial Number: 1

7. Status/Work: TESTED/INSPECTED

8. Remarks: Counter: Time since overhaul (TSO): 0 Days stored (OS):

9. Equi.No: 10671018

10. Ref.Doc.: 03-TM - C052

11. Rev.: 16

12. Return to Service in accordance with 14 CFR 43.9

13. Certified that unless otherwise specified in block 12, the work identified in block 11 and described in block 12 was accomplished in accordance with Title 14, Code of Federal Regulations, part 43 and in respect to that work, the items are approved for return to service.

14. FAA Certificate No.: SWRY322I

15. Name: Hans Burger

16. Date: 09/Mar/11

17. Signature: [Signature]

18. EASA Part145.A.50 Release to Service

19. Other regulations specified in block 12

20. Certificate that unless otherwise specified in block 12, the work identified in block 11 and described in block 12 was accomplished in accordance with Title 14, Code of Federal Regulations, part 43 and in respect to that work, the items are approved for return to service.

21. 13b. Approval/Authorisation Number

22. 14b. Authorised Signature

23. 14c. Get/Issue/Approval Ref. No.

24. 14d. Date (day)

25. 14e. Date (day)

26. 14f. Date (day)

27. 14g. Date (day)

28. 14h. Date (day)

29. 14i. Date (day)

30. 14j. Date (day)

31. 14k. Date (day)

32. 14l. Date (day)

33. 14m. Date (day)

34. 14n. Date (day)

35. 14o. Date (day)

36. 14p. Date (day)

37. 14q. Date (day)

38. 14r. Date (day)

39. 14s. Date (day)

40. 14t. Date (day)

41. 14u. Date (day)

42. 14v. Date (day)

43. 14w. Date (day)

44. 14x. Date (day)

45. 14y. Date (day)

46. 14z. Date (day)

47. 15a. Date (day)

48. 15b. Date (day)

49. 15c. Date (day)

50. 15d. Date (day)

51. 15e. Date (day)

52. 15f. Date (day)

53. 15g. Date (day)

54. 15h. Date (day)

55. 15i. Date (day)

56. 15j. Date (day)

57. 15k. Date (day)

58. 15l. Date (day)

59. 15m. Date (day)

60. 15n. Date (day)

61. 15o. Date (day)

62. 15p. Date (day)

63. 15q. Date (day)

64. 15r. Date (day)

65. 15s. Date (day)

66. 15t. Date (day)

67. 15u. Date (day)

68. 15v. Date (day)

69. 15w. Date (day)

70. 15x. Date (day)

71. 15y. Date (day)

72. 15z. Date (day)

73. 16a. Date (day)

74. 16b. Date (day)

75. 16c. Date (day)

76. 16d. Date (day)

77. 16e. Date (day)

78. 16f. Date (day)

79. 16g. Date (day)

80. 16h. Date (day)

81. 16i. Date (day)

82. 16j. Date (day)

83. 16k. Date (day)

84. 16l. Date (day)

85. 16m. Date (day)

86. 16n. Date (day)

87. 16o. Date (day)

88. 16p. Date (day)

89. 16q. Date (day)

90. 16r. Date (day)

91. 16s. Date (day)

92. 16t. Date (day)

93. 16u. Date (day)

94. 16v. Date (day)

95. 16w. Date (day)

96. 16x. Date (day)

97. 16y. Date (day)

98. 16z. Date (day)

99. 17a. Date (day)

100. 17b. Date (day)

101. 17c. Date (day)

102. 17d. Date (day)

103. 17e. Date (day)

104. 17f. Date (day)

105. 17g. Date (day)

106. 17h. Date (day)

107. 17i. Date (day)

108. 17j. Date (day)

109. 17k. Date (day)

110. 17l. Date (day)

111. 17m. Date (day)

112. 17n. Date (day)

113. 17o. Date (day)

114. 17p. Date (day)

115. 17q. Date (day)

116. 17r. Date (day)

117. 17s. Date (day)

118. 17t. Date (day)

119. 17u. Date (day)

120. 17v. Date (day)

121. 17w. Date (day)

122. 17x. Date (day)

123. 17y. Date (day)

124. 17z. Date (day)

125. 18a. Date (day)

126. 18b. Date (day)

127. 18c. Date (day)

128. 18d. Date (day)

129. 18e. Date (day)

130. 18f. Date (day)

131. 18g. Date (day)

132. 18h. Date (day)

133. 18i. Date (day)

134. 18j. Date (day)

135. 18k. Date (day)

136. 18l. Date (day)

137. 18m. Date (day)

138. 18n. Date (day)

139. 18o. Date (day)

140. 18p. Date (day)

141. 18q. Date (day)

142. 18r. Date (day)

143. 18s. Date (day)

144. 18t. Date (day)

145. 18u. Date (day)

146. 18v. Date (day)

147. 18w. Date (day)

148. 18x. Date (day)

149. 18y. Date (day)

150. 18z. Date (day)

151. 19a. Date (day)

152. 19b. Date (day)

153. 19c. Date (day)

154. 19d. Date (day)

155. 19e. Date (day)

156. 19f. Date (day)

157. 19g. Date (day)

158. 19h. Date (day)

159. 19i. Date (day)

160. 19j. Date (day)

161. 19k. Date (day)

162. 19l. Date (day)

163. 19m. Date (day)

164. 19n. Date (day)

165. 19o. Date (day)

166. 19p. Date (day)

167. 19q. Date (day)

168. 19r. Date (day)

169. 19s. Date (day)

170. 19t. Date (day)

171. 19u. Date (day)

172. 19v. Date (day)

173. 19w. Date (day)

174. 19x. Date (day)

175. 19y. Date (day)

176. 19z. Date (day)

177. 20a. Date (day)

178. 20b. Date (day)

179. 20c. Date (day)

180. 20d. Date (day)

181. 20e. Date (day)

182. 20f. Date (day)

183. 20g. Date (day)

184. 20h. Date (day)

185. 20i. Date (day)

186. 20j. Date (day)

187. 20k. Date (day)

188. 20l. Date (day)

189. 20m. Date (day)

190. 20n. Date (day)

191. 20o. Date (day)

192. 20p. Date (day)

193. 20q. Date (day)

194. 20r. Date (day)

195. 20s. Date (day)

196. 20t. Date (day)

197. 20u. Date (day)

198. 20v. Date (day)

199. 20w. Date (day)

200. 20x. Date (day)

201. 20y. Date (day)

202. 20z. Date (day)

203. 21a. Date (day)

204. 21b. Date (day)

205. 21c. Date (day)

206. 21d. Date (day)

207. 21e. Date (day)

208. 21f. Date (day)

209. 21g. Date (day)

210. 21h. Date (day)

211. 21i. Date (day)

212. 21j. Date (day)

213. 21k. Date (day)

214. 21l. Date (day)

215. 21m. Date (day)

216. 21n. Date (day)

217. 21o. Date (day)

218. 21p. Date (day)

219. 21q. Date (day)

220. 21r. Date (day)

221. 21s. Date (day)

222. 21t. Date (day)

223. 21u. Date (day)

224. 21v. Date (day)

225. 21w. Date (day)

226. 21x. Date (day)

227. 21y. Date (day)

228. 21z. Date (day)

229. 22a. Date (day)

230. 22b. Date (day)

231. 22c. Date (day)

232. 22d. Date (day)

233. 22e. Date (day)

234. 22f. Date (day)

235. 22g. Date (day)

236. 22h. Date (day)

237. 22i. Date (day)

238. 22j. Date (day)

239. 22k. Date (day)

240. 22l. Date (day)

241. 22m. Date (day)

242. 22n. Date (day)

243. 22o. Date (day)

244. 22p. Date (day)

245. 22q. Date (day)

246. 22r. Date (day)

247. 22s. Date (day)

248. 22t. Date (day)

249. 22u. Date (day)

250. 22v. Date (day)

251. 22w. Date (day)

252. 22x. Date (day)

253. 22y. Date (day)

254. 22z. Date (day)

255. 23a. Date (day)

256. 23b. Date (day)

257. 23c. Date (day)

258. 23d. Date (day)

259. 23e. Date (day)

260. 23f. Date (day)

261. 23g. Date (day)

262. 23h. Date (day)

263. 23i. Date (day)

264. 23j. Date (day)

265. 23k. Date (day)

266. 23l. Date (day)

267. 23m. Date (day)

268. 23n. Date (day)

269. 23o. Date (day)

270. 23p. Date (day)

271. 23q. Date (day)

272. 23r. Date (day)

273. 23s. Date (day)

274. 23t. Date (day)

275. 23u. Date (day)

276. 23v. Date (day)

277. 23w. Date (day)

278. 23x. Date (day)

279. 23y. Date (day)

280. 23z. Date (day)

281. 24a. Date (day)

282. 24b. Date (day)

283. 24c. Date (day)

284. 24d. Date (day)

285. 24e. Date (day)

286. 24f. Date (day)

287. 24g. Date (day)

288. 24h. Date (day)

289. 24i. Date (day)

290. 24j. Date (day)

291. 24k. Date (day)

292. 24l. Date (day)

293. 24m. Date (day)

294. 24n. Date (day)

295. 24o. Date (day)

296. 24p. Date (day)

297. 24q. Date (day)

298. 24r. Date (day)

299. 24s. Date (day)

300. 24t. Date (day)

301. 24u. Date (day)

302. 24v. Date (day)

303. 24w. Date (day)

304. 24x. Date (day)

305. 24y. Date (day)

306. 24z. Date (day)

307. 25a. Date (day)

308. 25b. Date (day)

309. 25c. Date (day)

310. 25d. Date (day)

311. 25e. Date (day)

312. 25f. Date (day)

313. 25g. Date (day)

314. 25h. Date (day)

315. 25i. Date (day)

316. 25j. Date (day)

317. 25k. Date (day)

318. 25l. Date (day)

319. 25m. Date (day)

320. 25n. Date (day)

321. 25o. Date (day)

322. 25p. Date (day)

323. 25q. Date (day)

324. 25r. Date (day)

325. 25s. Date (day)

326. 25t. Date (day)

327. 25u. Date (day)

328. 25v. Date (day)

329. 25w. Date (day)

330. 25x. Date (day)

331. 25y. Date (day)

332. 25z. Date (day)

333. 26a. Date (day)

334. 26b. Date (day)

335. 26c. Date (day)

336. 26d. Date (day)

337. 26e. Date (day)

338. 26f. Date (day)

339. 26g. Date (day)

340. 26h. Date (day)

341. 26i. Date (day)

342. 26j. Date (day)

343. 26k. Date (day)

344. 26l. Date (day)

345. 26m. Date (day)

346. 26n. Date (day)

347. 26o. Date (day)

348. 26p. Date (day)

349. 26q. Date (day)

350. 26r. Date (day)

351. 26s. Date (day)

352. 26t. Date (day)

353. 26u. Date (day)

354. 26v. Date (day)

355. 26w. Date (day)

356. 26x. Date (day)

357. 26y. Date (day)

358. 26z. Date (day)

359. 27a. Date (day)

360. 27b. Date (day)

361. 27c. Date (day)

362. 27d. Date (day)

363. 27e. Date (day)

364. 27f. Date (day)

365. 27g. Date (day)

366. 27h. Date (day)

367. 27i. Date (day)

368. 27j. Date (day)

369. 27k. Date (day)

370. 27l. Date (day)

371. 27m. Date (day)

372. 27n. Date (day)

373. 27o. Date (day)

374. 27p. Date (day)

375. 27q. Date (day)

376. 27r. Date (day)

377. 27s. Date (day)

378. 27t. Date (day)

379. 27u. Date (day)

380. 27v. Date (day)

381. 27w. Date (day)

382. 27x. Date (day)

383. 27y. Date (day)

384. 27z. Date (day)

385. 28a. Date (day)

386. 28b. Date (day)

387. 28c. Date (day)

388. 28d. Date (day)

389. 28e. Date (day)

390. 28f. Date (day)

391. 28g. Date (day)

392. 28h. Date (day)

393. 28i. Date (day)

394. 28j. Date (day)

395. 28k. Date (day)

396. 28l. Date (day)

397. 28m. Date (day)

398. 28n. Date (day)

399. 28o. Date (day)

400. 28p. Date (day)

401. 28q. Date (day)

402. 28r. Date (day)

403. 28s. Date (day)

404. 28t. Date (day)

405. 28u. Date (day)

406. 28v. Date (day)

407. 28w. Date (day)

408. 28x. Date (day)

409. 28y. Date (day)

410. 28z. Date (day)

411. 29a. Date (day)

412. 29b. Date (day)

413. 29c. Date (day)

414. 29d. Date (day)

415. 29e. Date (day)

416. 29f. Date (day)

417. 29g. Date (day)

418. 29h. Date (day)

419. 29i. Date (day)

420. 29j. Date (day)

421. 29k. Date (day)

422. 29l. Date (day)

423. 29m. Date (day)

424. 29n. Date (day)

425. 29o. Date (day)

426. 29p. Date (day)

427. 29q. Date (day)

428. 29r. Date (day)

429. 29s. Date (day)

430. 29t. Date (day)

431. 29u. Date (day)

432. 29v. Date (day)

433. 29w. Date (day)

434. 29x. Date (day)

435. 29y. Date (day)

436. 29z. Date (day)

437. 30a. Date (day)

438. 30b. Date (day)

439. 30c. Date (day)

440. 30d. Date (day)

441. 30e. Date (day)

442. 30f. Date (day)

443. 30g. Date (day)

444. 30h. Date (day)

445. 30i. Date (day)

446. 30j. Date (day)

447. 30k. Date (day)

448. 30l. Date (day)

449. 30m. Date (day)

450. 30n. Date (day)

451. 30o. Date (day)

452. 30p. Date (day)

453. 30q. Date (day)

454. 30r. Date (day)

455. 30s. Date (day)

456. 30t. Date (day)

457. 30u. Date (day)

458. 30v. Date (day)

459. 30w. Date (day)

460. 30x. Date (day)

461. 30y. Date (day)

462. 30z. Date (day)

463. 31a. Date (day)

464. 31b. Date (day)

465. 31c. Date (day)

466. 31d. Date (day)

467. 31e. Date (day)

468. 31f. Date (day)

469. 31g. Date (day)

470. 31h. Date (day)

471. 31i. Date (day)

472. 31j. Date (day)

473. 31k. Date (day)

474. 31l. Date (day)

475. 31m. Date (day)

476. 31n. Date (day)

477. 31o. Date (day)

478. 31p. Date (day)

479. 31q. Date (day)

480. 31r. Date (day)

481. 31s. Date (day)

482. 31t. Date (day)

483. 31u. Date (day)

484. 31v. Date (day)

485. 31w. Date (day)

486. 31x. Date (day)

487. 31y. Date (day)

488. 31z. Date (day)

489. 32a. Date (day)

490. 32b. Date (day)

491. 32c. Date (day)

492. 32d. Date (day)

493. 32e. Date (day)

494. 32f. Date (day)

495. 32g. Date (day)

496. 32h. Date (day)

497. 32i. Date (day)

498. 32j. Date (day)

499. 32k. Date (day)

500. 32l. Date (day)

501. 32m. Date (day)

502. 32n. Date (day)

503. 32o. Date (day)

504. 32p. Date (day)

505. 32q. Date (day)

506. 32r. Date (day)

507. 32s. Date (day)

508. 32t. Date (day)

509. 32u. Date (day)

510. 32v. Date (day)

511. 32w. Date (day)

512. 32x. Date (day)

513. 32y. Date (day)

514. 32z. Date (day)

515. 33a. Date (day)

516. 33b. Date (day)

517. 33c. Date (day)

518. 33d. Date (day)

519. 33e. Date (day)

520. 33f. Date (day)

521. 33g. Date (day)

522. 33h. Date (day)

523. 33i. Date (day)

524. 33j. Date (day)

525. 33k. Date (day)

526. 33l. Date (day)

527. 33m. Date (day)

528. 33n. Date (day)

529. 33o. Date (day)

530. 33p. Date (day)

531. 33q. Date (day)

532. 33r. Date (day)

533. 33s. Date (day)

534. 33t. Date (day)

535. 33u. Date (day)

536. 33v. Date (day)

537. 33w. Date (day)

538. 33x. Date (day)

539. 33y. Date (day)

540. 33z. Date (day)

541. 34a. Date (day)

542. 34b. Date (day)

543. 34c. Date (day)

544. 34d. Date (day)

545. 34e. Date (day)

546. 34f. Date (day)

547. 34g. Date (day)

548. 34h. Date (day)

549. 34i. Date (day)

550. 34j. Date (day)

551. 34k. Date (day)

552. 34l. Date (day)

553. 34m. Date (day)

554. 34n. Date (day)

555. 34o. Date (day)

556. 34p. Date (day)

557. 34q. Date (day)

558. 34r. Date (day)

559. 34s. Date (day)

560. 34t. Date (day)

561. 34u. Date (day)

562. 34v. Date (day)

563. 34w. Date (day)

564. 34x. Date (day)

565. 34y. Date (day)

566. 34z. Date (day)

567. 35a. Date (day)

568. 35b. Date (day)

569. 35c. Date (day)

570. 35d. Date (day)

571. 35e. Date (day)

572. 35f. Date (day)

573. 35g. Date (day)

574. 35h. Date (day)

575. 35i. Date (day)

576. 35j. Date (day)

577. 35k. Date (day)

578. 35l. Date (day)

579. 35m. Date (day)

580. 35n. Date (day)

581. 35o. Date (day)

582. 35p. Date (day)

583. 35q. Date (day)

584. 35r. Date (day)

585. 35s. Date (day)

586. 35t. Date (day)

587. 35u. Date (day)

588. 35v. Date (day)

589. 35w. Date (day)

590. 35x. Date (day)

591. 35y. Date (day)

592. 35z. Date (day)

593. 36a. Date (day)

594. 36b. Date (day)

595. 36c. Date (day)

596. 36d. Date (day)

597. 36e. Date (day)

598. 36f. Date (day)

599. 36g. Date (day)

600. 36h. Date (day)

601. 36i. Date (day)

602. 36j. Date (day)

603. 36k. Date (day)

604. 36l. Date (day)

605. 36m. Date (day)

606. 36n. Date (day)

607. 36o. Date (day)

608. 36p. Date (day)

609. 36q. Date (day)

610. 36r. Date (day)

611. 36s. Date (day)

612. 36t. Date (day)

613. 36u. Date (day)

614. 36v. Date (day)

615. 36w. Date (day)

616. 36x. Date (day)

617. 36y. Date (day)

618. 36z. Date (day)

619. 37a. Date (day)

620. 37b. Date (day)

621. 37c. Date (day)

622. 37d. Date (day)

623. 37e. Date (day)

624. 37f. Date (day)

625. 37g. Date (day)

626. 37h. Date (day)

627. 37i. Date (day)

628. 37j. Date (day)

629. 37k. Date (day)

630. 37l. Date (day)

631. 37m. Date (day)

632. 37n. Date (day)

633. 37o. Date (day)

634. 37p. Date (day)

635. 37q. Date (day)

636. 37r. Date (day)

637. 37s. Date (day)

638. 37t. Date (day)

639. 37u. Date (day)

640. 37v. Date (day)

641. 37w. Date (day)

642. 37x. Date (day)

643. 37y. Date (day)



Record a new component

Blue Eye - Components Status

Components Status View Settings

Aircraft Components Engines Component Propellers Preview List Raw Grid Preview Preview Item Expand All Collapse All Columns Filters Groups Import Data Spreadsheet Import Edit Edit List

G-DEMO3 Select All

Fleet Overview

Aircraft and Engines e-Book Reports

Fleet Status

Components Status Maintenance Packages Publications Miscellaneous Items Overhauls Changes Embodied

Operation Maintenance Resources

Maintenance Manuals MEL Minimum Equipment Lists ATA ATA List Address Book Administration

Aircraft Reg. ATA

Flag	Designation	Reference	Serial Number	Install Date	Status	Rel. Files
Aircraft Reg.: G-DEMO3						
ATA: 29 - HYDRAULIC POWER						
+	BEACON UNDERWATER LOC.ULB	3-1531	001	22/03/2013	Installed	1

Your component is now saved in the Cloud, and its associated potential(s) are now being tracked by the system

When saving is complete, you automatically go back to the secured state (no modifications allowed)

Aircraft Component 1 of 1

Calendar

Repetitive	Status	Action/Chap.	Potential	Tolerance	Start Date	Current Used	Used Tol.	Remaining	Deadline on A/C
<input checked="" type="checkbox"/>	Active	Discard - SCRAP BATTERY - CMM 23-51-34, MPD 237135-01-1	6 Years	0 Day	23/03/2013	0 Day	0,00 %	6 Years	23/03/2019

Aircraft Component General

On Aircraft: G-DEMO3

Designation: BEACON UNDERWATER LOC.ULB

Reference: 3-1531

Serial Number: 001

Sub Assy of ATA: 29 Not Concerned Has Log Card

Installation

Install Date: 22/03/2013

Component TT: 0 Hrs 0 mn Comp. Ldgs: 0 Ldg

Aircraft TT: 8500 Hrs 0 mn Aircraft Ldgs: 3400 Ldgs Comp. Dpgs: 0 Dpg

Removal

Removal Date:

Component TT: Comp. Ldgs:

Aircraft TT: Aircraft Ldgs: Comp. Dpgs:

Current Status

Status: Installed

Replacing:

Replaced By:

Connected as: blueeye On: beDemo3 Server: https://azure.mrxsys.com/Services/BlueLifeService.aspx Nothing Stop



Fleet status is automatically updated

Blue Eye - Aircraft And Engines

Aircraft And Engines View Settings

Aircraft Engines Preview List Raw Grid Preview Print Options Expand All Collapse All Columns Filters Import Data Edit

Info Display List Selection Spreadsheet Import Edit List

Aircraft Fleet

Category: Business Jet

A/C Reg	S/N	Type	Flight Time	Landings	Manufacture Date	Operations	C of A	Registration Authority
G-DEMO3	420	A320	8500 Hrs 0 mn	3400	10/04/2004	Transport	COA0001	CAA

In the fleet overview page you can now see that the next calendar deadline has been updated with the potential of the component recorded. A flag system lets you know of critical (orange) or overdue (red) potentials. Here it is green as it has 6 years of potential remaining

Next Due Aircraft

Next Due In	Description
Calendar: 6 Ys	BEACON UNDERWATER LOC.ULB Ref: 3-1531 S/N: 001

Hour:

Landing:

Dropping:

General

S/N: 420

Type: A320

Category: Business Jet

Current Status

Total Time S/N: 8500 Hrs 0 mn

Total Landings: 3400

Total Droppings:

Maintenance Manual

Reference: MyCAMO - A320 - Issue 1 - Rev. 0

Connected as: blueeye On: beDemo3 Server: https://azure.mrxsys.com/Services/BlueLifeService.asmx Nothing Stop



Extract reports in 3 clicks

Blue Eye - Reports

Reports View Settings

Quick Print Print Scale Margins Orientation Size Find First Page Previous Page Next Page Last Page Many Pages Zoom Out Zoom Zoom In Page Color Watermark Export To E-Mail As Export

G-DEMO3 Select All

Fleet Overview

Aircraft and Engines

e-Book

Reports

Fleet Status

Components Status

Maintenance Packages

Publications

Miscellaneous Items

Overhauls

Changes Embodied

Operation

Maintenance

Resources

Administration

In the report section, you can extract your components status by selecting the required aircraft and the required data

Aircraft information of G-DEMO3

MY LOGO

General

1 - Nationality And Registration Mark : G-DEMO3

2 - Category : Business Jet

3 - Aircraft Type : A320

4 - Serial Number : 420

Status

5 - Total Flight Time : 8500 Hrs 0 mn

6 - Total Landings : 3400

7 - Total Droppings :

Manufacture

8 - Maker : Airbus

9 - Authority : DGAC

10 - Type Certificate :

11 - Prod Approval :

12 - Place : Toulouse

13 - Date : 10/04/2004

Operation

14 - CoA : COA0001

15 - Owner / Operator : MyOperator

16 - Classification : Transport

Report Date : 22/02/2013

Aircraft Component Status of A/CG-DEMO3

MY LOGO

Designation Reference %/h Zone Sub Component of Current Status Reported By (S/N) Installation Date Aircraft TT Component TT Action Component TT

ATA 20 - HYDRAULIC POWER

2-1001 Not Approved Not used 22/02/2013 0 hrs 0 mn

BEACON UNDERCART

001 Status and Reliability Frequency Tolerance Last Perform Next Due Current Used Remarks

001 Active - Repetitive 6 Hz 0 Day 22/02/2013 22/02/2013 0 Day 6 Hz

Report Date : 22/02/2013

All the required information are stacked into a single report

Aircraft Engines

Filters and Options

Aircraft G-DEMO3

Aircraft Log Book / Part 1

Aircraft Information

Changes Embodied

Engines List

Propellers List

Aircraft Log Book / Part 2

Time Range From 01/02/2013

Until 23/03/2013

Operation Records

Maintenance Records M.R Detailed

Status

Components

Packages

Airworthiness Directives

Manufacturer Publications

Miscellaneous Items

Generate

Connected as: blueeye On: beDemo3 Server: https://azure.mrxsys.com/Services/BlueLifeService.aspx Page 1 of 2



Extract reports in 3 clicks

Your own logo appears on every report

Aircraft Component Status of A/C G-DEMO3

MY LOGO

Designation	Reference S/N	Zone Position	Sub Component of	Current Status	Installation Date	Removal Date
				Replaced By (S/N)	Aircraft TT	Component TT
ATA 29 - HYDRAULIC POWER						
BEACON UNDERWATER LOCULB	3-1531 001		Not Applicable	Installed	22/03/2013	
				Not replaced	8500 Hrs 0 mn	0 Hrs 0 mn
Action	Status and Repetibility	Frequency	Tolerance	Last Perform	Next Due	Component Used
Discard - SCRAP BATTERY - CMM 23-51-34, MPD 237135-01-1	Active - Repetitive	6 Yrs	0 Day	23/03/2013	23/03/2019	0 Yrs
						Remaining
						6 Yrs

Report Date: 23/03/2013

2/2

Here we find the newly created component and its associated potential(s)

You can export the result in PDF, XLS, XLSX, HTML, etc. or directly send it by email



Generate due lists and create work orders

Blue Eye - Maintenance Scheduler

Maintenance Scheduler | Reports | View | Settings

Due List | Scheduler | Preview Print | Raw Grid Preview | Expand All | Collapse All | List Selection | Settings | Display Due List | Next Tasks | Next Due | Add to New Purchase Order | Add All Tasks to New PO | Add to Existing PO

Info Display | Print Options | List Selection | Due List | Next Due | Purchase Order

Support

Flag	Reference	S/N	Designation	Action	Potential	Support Deadline	Remaining	Purchase Order	Estimated Deadline
Support: A/C - G-DEMO3									
	3-1531	001	BEACON UNDERWATER LOC.ULB	Discard - SCRAP BATTERY CMM 23-51-34, MPD 237135-01-1	6 Years	23/03/2019	6 Years		23/03/2019

Tasks

- Components (1 Task)
- Packages (0 Task)
- Additional (0 Task)
- ADs and MPDs (0 Task)
- Misc. Items (0 Task)

Scheduler Settings

☒ Last 3 Months
☐ Manual

from: 23/12/2012 to: 23/03/2013

Avg. Flight Time/Day 00:00
Avg. Landings/Day 0
Avg. Droppings/Day 0
Avg. Eng. Cycle/Day 0
Avg. Cycle N1/Day 0
Avg. Cycle N2/Day 0
Avg. Cycle N3/Day 0

Reset Real Averages
Refresh Scheduler

Navigation Sidebar:

- Fleet Overview
- Aircraft and Engines
- e-Book
- Reports
- Fleet Status
- Components Status
- Maintenance Packages
- Publications
- Miscellaneous Items
- Overhauls
- Changes Embodied
- Operation
- Maintenance
- Maintenance Scheduling**
- Purchase Orders
- Maintenance Records
- Resources
- Administration

Component Task 1 of 1

Connected as: blueeye On: beDemo3 Server: https://azure.mrxsys.com/Services/BlueLifeService.aspx Nothing

You can select any required maintenance by checking it then clicking on the Add To New Purchase Order button in the main ribbon

In the Maintenance Scheduling module, you can access all of your due maintenance for your aircraft

Generate due lists and create work orders

The screenshot displays the 'Blue Eye - Maintenance Scheduler' application. The interface includes a top menu bar with 'Maintenance Scheduler', 'Reports', 'View', and 'Settings'. Below this is a toolbar with icons for 'Due List', 'Scheduler', 'Preview', 'Raw Grid', 'Expand All', 'Collapse All', 'List Selection', 'Settings', 'Display Due List', 'Next Tasks', 'Add', 'Cancel', 'Generate PO', and 'Actions'. The main window is divided into several panes:

- Left Pane:** Contains a sidebar with navigation options like 'Fleet Overview', 'Aircraft and Engines', 'e-Book', 'Reports', 'Fleet Status', 'Components Status', 'Maintenance Packages', 'Publications', 'Miscellaneous Items', 'Overhauls', 'Changes Embodied', 'Operation', 'Maintenance', 'Maintenance Scheduling', 'Purchase Orders', 'Maintenance Records', 'Resources', and 'Administration'.
- Components Tasks Pane:** Displays a table of tasks. The table has columns for 'Support', 'Flag', 'Reference', 'S/N', 'Designation', and 'Action'. A task is selected: 'Support: A/C - G-DEMO3', 'Reference: 3-1531', 'S/N: 001', 'Designation: BEACON UNDERWATER LOC.ULB', and 'Action: Discard - SCRAP BATTERY 23-51-34, MPD 237135-1'.
- Tasks Pane:** Shows a list of task categories: 'Components (1 Task)', 'Packages (0 Task)', 'Additional (0 Task)', 'ADs and MPs (0 Task)', and 'Misc. Items (0 Task)'.
- Scheduler Settings Pane:** Contains settings for the scheduler, including 'Last 3 Months' and 'Manual' options, and a 'Reset Real Averages' button.
- Preview Pane:** Displays a 'work order' form. The form includes fields for 'Apply to:', 'ATA:', 'Component:', 'Reference:', 'Serial N°:', 'Batch N°:', 'Work Description:', 'Work Performed:', and 'Maintenance release:'. The 'Task card - Component' is highlighted with a blue box and an arrow pointing to it.

A blue callout box with the text 'This allows you to create orders by automatically generating the required task cards' points to the 'Task card - Component' section of the work order form.

work order
Page 2/4

Ref: WO DEB 13 1 RO
Date: 23/03/2013
Status: Open

A/C Reg: G-DEMO3
S/N: 420
Type: A320

MY LOGO

Task card - Component

Apply to: A/C - G-DEMO3
ATA: 29 - HYDRAULIC POWER

Component Concerned

Component: BEACON UNDERWATER LOC.ULB
Reference: 3-1531
Serial N°: 001
Batch N°:

Work Description

Discard - SCRAP BATTERY - CMM 23-51-34, MPD 237135-01-1
Deadline: 23/03/2019

Work Performed

Defects Raised	YES	NO	Technician Sign.	Certification Sign.
Independent Inspection	YES	NO		

Maintenance release

Certifies that the work specified, except as otherwise specified, was carried out in accordance with Part 145, and in respect to that work the aircraft/aircraft component is considered ready for release to service.

Workshop agreement N°	Tech. Licence N°	Date	Signature and Stamp
-----------------------	------------------	------	---------------------

Engines and APUs components status

Blue Eye - Components Status

Components Status View Settings

Aircraft Components Engines Component Propellers Preview List Raw Grid Preview Preview Item Expand All Collapse All Columns Filters Groups Import Data Cancel Changes Add Duplicate Element Remove Save Data Actions

Engines Components

On Engine 841802

Flag	Designation	Reference	S/N	Install Date	Status
	ATA				Installed

After adding a new component, you can select to which engine or APU it is linked in the dropdown list

In this example we have recorded our first aircraft component into our demo aircraft status. It is then possible to perform the same procedure to record our engines and APUs components status

Engine Component Related Files Historical

General

On Engine 841802

S/N	Type	Position
841802	CFM56-5A3	Left
841803	CFM56-5A3	Right
R-2122	GTCP 131-9A	APU

Installation

Install Date

Component TT Cy Eng Cy N2

Engine TT Cy Eng Cy N2

Removal

Removal Date

Component TT Cy Eng Cy N2

Engine TT Cy Eng Cy N2

Current Status

Status Installed

Replacing

Replaced By

Engine Component 1 of 1

Calendar Hour Eng. Cycle Cy. N1 Cy. N2 Cy. N3

Repetitive	Status	Action/Chap.	Potential	Tolerance	Start Date	Current Used	Used Tol.	Remaining	Deadline on Eng.
------------	--------	--------------	-----------	-----------	------------	--------------	-----------	-----------	------------------

Connected as: blueeye On: beDemo3 Server: https://azure.mrxsys.com/Services/BlueLifeService.aspx Nothing