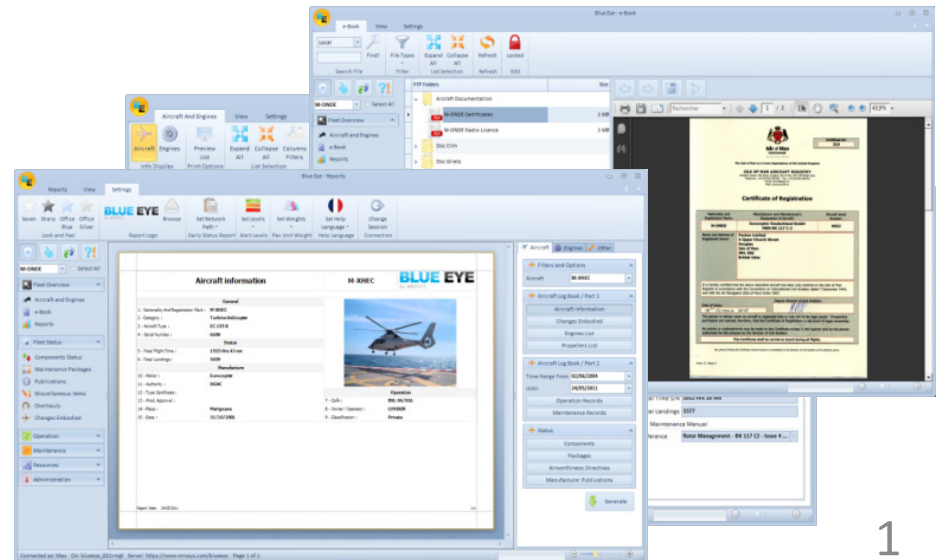


# BLUE EYE SYSTEM HOW TOs

Editing and saving data





## Switch to Edit Mode

Blue Eye - Components Status

Components Status View Settings

Aircraft Components Engines Component Propellers Info Display

Select the required aircraft on which you wish to perform modifications

Groups Import Data Spreadsheet Import Edit Edit List

Aircraft Reg.: M-LUNA ATA

Flag Designation Reference Serial Number Install

Aircraft Reg.: M-LUNA

| Flag | Designation                              | Reference  | Serial Number | Install    |
|------|--|------------|---------------|------------|
| >    | ATA: 18 - VIBRATION AND NOISE ANALYSIS   |            |               |            |
| >    | ATA: 21 - AIR CONDITIONING               |            |               |            |
| >    | ATA: 22 - AUTO FLIGHT                    |            |               |            |
| >    | ATA: 23 - COMMUNICATIONS                 |            |               |            |
| >    | ATA: 24 - ELECTRICAL POWER               |            |               |            |
| >    | ATA: 25 - EQUIPMENT / FURNISHINGS        |            |               |            |
| >    | ATA: 26 - FIRE PROTECTION                |            |               |            |
| ↑    | Hand Fire Extinguisher Air Total         | HAL1-74-00 | 19438         |            |
| ↑    | Hand Fire Extinguisher Air Total         | HAL1-74-00 | 19468         |            |
| ↑    | Expl. Cartridge                          | 30903896   | 0511JJ        |            |
| ↑    | Expl. Cartridge                          | 30903896   | 0493JJ        |            |
| ↑    | Expl. Cartridge                          | 30903894   | 0576JJ        |            |
| ↑    | Expl. Cartridge                          | 30903894   | 0551JJ        |            |
| ↑    | Fire Extinguisher FWD                    | 33000061-1 | 52474AI       | 01/12/2008 |
| ↑    | Fire Extinguisher AFT                    | 33000061-1 | 52473A        | 01/12/2008 |
| >    | ATA: 28 - FUEL                           |            |               |            |
| >    | ATA: 29 - HYDRAULIC POWER                |            |               |            |
| >    | ATA: 31 - INDICATING / RECORDING SYSTEMS |            |               |            |
| >    | ATA: 32 - LANDING GEAR                   |            |               |            |
| >    | ATA: 33 - LIGHTS                         |            |               |            |
| >    | ATA: 34 - NAVIGATION                     |            |               |            |

Aircraft Component 1 of 557

Connected as: amsaircraft On: beDemo1 Server: https://www.mrxsys.com/blueeye Nothing

Click the « Edit » button

Aircraft Component Related Files Historical

General

Reference 0183M2023101

Serial Number 209

Sub Assy of Not Concerned

ATA 18 Has Log Card

Installation

Install Date 01/12/2008

Component TT Comp. Ldgs

0 Hrs 0 mn Comp. Dpgs

Aircraft TT Aircraft Ldgs

Comp. Dpgs

Removal

Removal Date

Component TT Comp. Ldgs

Comp. Dpgs

Aircraft TT Aircraft Ldgs

Comp. Dpgs

Current Status

Status Installed

Replaced By



## Modify data

Blue Eye - Components Status

Components Status View Settings

Aircraft Components Engines Component Propellers Preview Raw Grid Preview Import Data Cancel Changes Add Duplicate Element Remove Save Data

Aircraft Component Related Files Historical

General

On Aircraft M-LUNA

Designation Expl. Cartridge

Reference 30903896

Installation

Install Date

Component TT Comp. Ldgs

Aircraft TT Aircraft Ldgs

Removal

Removal Date

Component TT Comp. Ldgs

Aircraft TT Aircraft Ldgs

Current Status

Status Installed

Replaced By

Flag Designation

Aircraft Reg.: M-LUNA

ATA: 18 - VIBRATION AND

ATA: 21 - AIR CONDITION

ATA: 22 - AUTO FLIGHT

ATA: 23 - COMMUNICATIONS

ATA: 24 - ELECTRICAL POWER

ATA: 25 - EQUIPMENT / FURNISHINGS

ATA: 26 - FIRE PROTECTION

Hand Fire Extinguisher Air Total HAL1-74-00

Hand Fire Extinguisher Air Total HAL1-74-00 19468

Expl. Cartridge 30903896 0511JJ

Expl. Cartridge 30903896 0493JJ

Expl. Cartridge 30903894 0576JJ

Aircraft Component 68 of 557

Calendar Hour Landing Dropping

Repetitive Status Action Potential Tolerance Start Date Current Used Used To

Active Replacement 10 Years 0 Day 01/10/2008 3 Years 4 Mont... 0,00 %

Connected as: amsaircraft On: beDemo1 Server: https://www.mrxsys.com/blueeye Nothing

Add a new element in the main list. Here add a new aircraft component

Duplicate the selected element

Remove/Delete the selected element



## Modify data

Blue Eye - Components Status

Components Status View Settings

Aircraft Components Engines Component Propellers Preview List Raw Grid Preview Expand All Collapse All Columns Filters Groups Import Data Cancel Changes Add Duplicate Element Remove Save Data

M-LUNA Select All

Fleet Overview

Aircraft and Engines e-Book Reports

Fleet Status

Components Status Maintenance Packages Publications Miscellaneous Items Overhauls Changes Embodied

Operation Maintenance Resources Administration

Aircraft Reg. ATA

| Flag                                   | Designation                      | Reference  | Serial Number | Install Date |
|--|----------------------------------|------------|---------------|--------------|
| Aircraft Reg.: M-LUNA                  |                                  |            |               |              |
| ATA: 18 - VIBRATION AND NOISE ANALYSIS |                                  |            |               |              |
| ATA: 21 - AIR CONDITIONING             |                                  |            |               |              |
| ATA: 22 - AUTO FLIGHT                  |                                  |            |               |              |
| ATA: 23 - COMMUNICATIONS               |                                  |            |               |              |
| ATA: 24 - ELECTRICAL POWER             |                                  |            |               |              |
| ATA: 25 - EQUIPMENT / FURNISHINGS      |                                  |            |               |              |
| ATA: 26 - FIRE PROTECTION              |                                  |            |               |              |
| ↑                                      | Hand Fire Extinguisher Air Total | HAL1-74-00 | 19438         |              |
| ↑                                      | Hand Fire Extinguisher Air Total | HAL1-74-00 | 19468         |              |
| ↑                                      | Expl. Cartridge                  | 30903896   | 0511JJ        |              |
| ↑                                      | Expl. Cartridge                  | 30903896   | 0493JJ        |              |
| ↑                                      | Expl. Cartridge                  | 30903894   | 0576JJ        |              |

Aircraft Component 68 of 557

Calendar Hour Landing Dropping

| Repetitive                          | Status | Action      | Potential | Tolerance | Start Date | Current Used      | Used To |
|-------------------------------------|--------|-------------|-----------|-----------|------------|-------------------|---------|
| <input checked="" type="checkbox"/> | Active | Replacement | 10 Years  | 0 Day     | 01/10/2008 | 3 Years 4 Mont... | 0,00 %  |

Modify an existing element in the "Details" Tab or directly in the grid

Aircraft Component

General

On Aircraft M-LUNA

Designation Expl. Cartridge

Reference 30903896

Serial Number 0511JJ

Sub Assy of Not Concerned

ATA 26 Has Log Card

Installation

Install Date

Component TT Comp. Ldgs

Comp. Dpgs

Aircraft TT Aircraft Ldgs

Comp. Dpgs

Removal

Removal Date

Component TT Comp. Ldgs

Comp. Dpgs

Aircraft TT Aircraft Ldgs

Comp. Dpgs

Current Status

Status Installed

Replaced By

Connected as: amsaircraft On: beDemo1 Server: https://www.mrxsys.com/blueeye Nothing



## Modify data - Potentials

Blue Eye - Components Status

Components Status View Settings

Aircraft Components Engines Component Propellers Preview Raw Grid Preview Expand All Collapse All Columns Filters Groups Import Data Cancel Changes Add Duplicate Element Remove Save Data

Aircraft Component Related Files Historical

General

On Aircraft: M-LUNA  
Designation: Expl. Cartridge  
Reference: 30903896  
Serial Number: 0511JJ  
Sub Assy of: Not Concerned  
ATA: 26 Has Log Card

Installation

Install Date:   
Component TT:   
Comp. Ldgs:   
Comp. Dpgs:   
Aircraft TT:   
Aircraft Ldgs:   
Comp. Dpgs:

Removal

Removal Date:   
Component TT:   
Comp. Ldgs:   
Comp. Dpgs:   
Aircraft TT:   
Aircraft Ldgs:   
Comp. Dpgs:

Current Status

Status: Installed  
Replaced By:

Aircraft Reg.: M-LUNA

ATA: 18 - VIBRATION AND NOISE ANALYSIS  
ATA: 21 - AIR CONDITIONING  
ATA: 22 - AUTO FLIGHT  
ATA: 23 - COMMUNICATIONS  
ATA: 24 - ELECTRICAL POWER  
ATA: 25 - EQUIPMENT / FURNISHINGS  
ATA: 26 - FIRE PROTECTION

Hand Fire Extinguisher Air Total  
Hand Fire Extinguisher Air Total  
Expl. Cartridge  
Expl. Cartridge  
Expl. Cartridge

Set the potentials associated to the selected element in the "Associated Limits" section

Repetitive: ☒ Status: Active Action: Replacement Potential: 10 Years Tolerance: 0 Day Start Date: 01/10/2008 Current Used: 3 Years 4 Mont... Used To: 0,00 %

Add new potential Delete existing potential

Connected as: amsaircraft On: beDemo1 Server: https://w



## Modify data - Potentials

Blue Eye - Components Status

Components Status View Settings

Aircraft Components Engines Component Propellers Preview Raw Grid Preview Import Data Cancel Changes Add Duplicate Remove Save Data

Info Display List Selection Spreadsheet Import Edit List Actions

M-LUNA Select All

Fleet Overview

Aircraft and Engines e-Book Reports

Fleet Status

Components Status Maintenance Packages Publications Miscellaneous Items Overhauls Changes Embodied

Operation Maintenance Resources Administration

Aircraft Reg. ATA

Flag Designation Reference Serial Number Install Date

Aircraft Reg.: M-LUNA

ATA: 18 - VIBRATION AND NOISE ANALYSIS

ATA: 21 - AIR CONDITIONING

ATA: 22 - AUTO FLIGHT

ATA: 23 - COMMUNICATIONS

ATA: 24 - ELECTRICAL POWER

ATA: 25 - EQUIPMENT / FURNISHINGS

ATA: 26 - FIRE PROTECTION

Hand Fire Extinguisher Air Total HAL1-74-00 19438

Hand Fire Extinguisher Air Total HAL1-74-00 19468

Expl. Cartridge 30903896 0511JJ

Expl. Cartridge 30903896 0493JJ

Expl. Cartridge 30903894 0576JJ

Aircraft Component 68 of 557

Calendar Hour Landing Dropping

Repetitive Status Action Potential Tolerance Start Date Current Used Used To

Active Replacement 10 Years 0 Day 01/10/2008 3 Years 4 Mont... 0,00 %

Aircraft Component

General

On Aircraft M-LUNA

Designation Expl. Cartridge

Reference 30903896

Serial Number 0511JJ

Has Log Card

Component TT Comp. Ldgs

Aircraft TT Aircraft Ldgs

Removal

Removal Date

Component TT Comp. Ldgs

Aircraft TT Aircraft Ldgs

Current Status

Status Installed

Replaced By

Cancel the changes/modifications performed

Save the changes/Modifications performed to the server

Connected as: amsaircraft On: beDemo1 Server: https://www.mrxsys.com/blueeye Nothing



## Why is my “Edit” button not available

Blue Eye - Components Status

Components Status View Settings

Aircraft Components Engines Component Propellers Preview Raw Grid Preview Expand All Collapse All Columns Filters Groups Import Data Edit

Info Display Print Options List Selection Spreadsheet Import Edit List

All Aircraft ☒ Select All

Aircraft Reg. ATA

Fleet Overview

Aircraft and Engines e-Book Reports

Fleet Status

Components Status Maintenance Packages Publications Miscellaneous Items Overhauls Changes Embodied

Operation Maintenance Resources Administration

Aircraft Component 1359 of 1848

Calendar

Repetitive Status Action Potential Tolerance Start Date Current Used Used To

☒ Active Replacement 10 Years 0 Day 01/10/2008 3 Years 4 Mont... 0,00 %

Hand Fire Extinguisher Air Total HAL1-74-00 19438

Hand Fire Extinguisher Air Total HAL1-74-00 19468

Aircraft Component

General

On Aircraft M-LUNA

Designation Expl. Cartridge

Reference 30903896

Serial Number 0511JJ

Sub Assy of Not Concerned

ATA 26 Has Log Card

Installation

Install Date

Component TT Comp. Ldgs

Comp. Dpgs

Aircraft TT Aircraft Ldgs

Comp. Dpgs

Removal

Removal Date

Component TT Comp. Ldgs

Comp. Dpgs

Aircraft TT Aircraft Ldgs

Comp. Dpgs

Current Status

Status Installed

Replaced By

You cannot go to edit mode when you have the “Select All” check box selected. This is a security to make sure that you only modify data of the aircraft you have selected

Connected as: amsaircraft On: beDemo1 Server: https://www.mrxsys.com/blueeye Nothing



## Why is my “Edit” button not available

Blue Eye - Components Status

Components Status View Settings

Aircraft Components Engines Component Propellers Preview Raw Grid Preview Expand All Collapse All Columns Filters Groups Import Data Edit

Info Display Print Options List Selection Spreadsheet Import Edit List

M-LUNA Select All

Aircraft Reg. ATA

Fleet Overview

Aircraft and Engines e-Book Reports

Fleet Status

Components Status Maintenance Packages Publications Miscellaneous Items Overhauls Changes Embodied

Operation Maintenance Resources Administration Users

Aircraft Component 68 of 557

Calendar

Repetitive Status Action Potential Tolerance Start Date Current Used Used To

Active Replacement 10 Years 0 Day 01/10/2008 3 Years 4 Mont... 0,00 %

Connected as: readOnlyUser On: beDemo1 Server: https://www.mrxsys.com/blueeye Nothing

**You cannot go to edit mode if you have a read only access. In this case report to your administrator to obtain a read/write access**

**General**

On Aircraft M-LUNA

Designation Expl. Cartridge

Reference 30903896

Serial Number 0511JJ

Sub Assy of Not Concerned

ATA 26 Has Log Card

**Installation**

Install Date

Component TT Comp. Ldgs

Comp. Dpgs

Aircraft TT Aircraft Ldgs

Comp. Dpgs

**Removal**

Removal Date

Component TT Comp. Ldgs

Comp. Dpgs

Aircraft TT Aircraft Ldgs

Comp. Dpgs

**Current Status**

Status Installed

Replaced By